

**Electro-Hydraulic Watertight  
Sliding door EAGLE Q-line  
(article code 441.)****Eagle Q-line watertight sliding door**

The electro-hydraulic watertight sliding door EAGLE is a new type of compact door. It is supplied as a completely finished and tested unit, ready for welding in. It combines the well known proven mechanical design of the doors, in standard sizes, with a standardized and simplified hydraulic and electrical system. This means there are less options but it turns out to be a **cost saver for the yard without compromising on quality.**

The design and manufacture of EAGLE doors are in full compliance with the IMO/SOLAS safety regulations regarding Class II doors to fulfil the watertight integrity of the vessel and is type approved by all major classification societies.

**Specifications (standard scope)****Available sizes**

Height: min. 1600mm / max. 2100mm with interval of 50mm.  
Width: min. 600mm / max. 1200mm with interval of 50mm.

**Sill height**

140 mm.

**Water pressure**

Limited to 10 mWc (i.e. test pressure).

**Hydraulic system**

20L tank combined with 0,75 kW e-motor with gear pump. Local hand pump, operable at both sides of door. Valve block with integrated control lever operable on both sides of the door including 2 proximity switches (IP68) to activate pump motor.

**Electrical system**

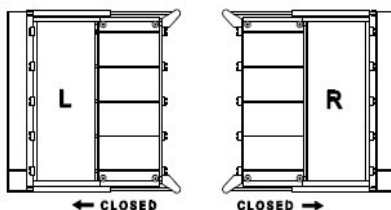
IP 68 RAL 7032 watertight e-box with local control and indication system. IP 68 position indicators open/closed. IP 66 sounder/flash light, both sides of door. Power supply: 400 VAC, 3ph, 50Hz or 440 VAC, 3ph, 60Hz for pump motor: 24 VDC for control and indication system.

**Surface treatment**

Door frame and door plate: shotblasted SA2,5 and primed with one layer of Sigmaweld MC (30 mu)  
Cylinders: shotblasted and primed. Catch blocks, rails, wheels and tank: galvanised.

**Installation, operation and maintenance manual**

Digital supplied on CD ROM in UK language (.pdf format). Also downloadable from our website [www.winel.nl](http://www.winel.nl).

**Sliding directions**

**Sliding direction:**  
L = left closing  
R = right closing

*All components are pre-mounted by Winel incl. local electric wiring unless otherwise specified.  
For detailed dimensions please download the scaled general arrangement of the door on AutoCAD format (free of charge).*

**Electro-Hydraulic Watertight  
Sliding door EAGLE Q-line  
(article code 441.)**

**Available options**

**Wheelhouse panel (art. code 9534.4000.X; X=amount of doors)**

3mm aluminium mounting plate with black engraved letters/lines for installation on the bridge showing the location of the doors. Above mentioned plate is connected with 1,5 m cable to the relay plate on which the control components are placed. Panel is executed with a "master mode" switch to activate the central close command, indication lights open/closed, alarm indications for power loss, buzzer, accept alarm, dimmer and a led-test button. Panel has to be supplied with two separate power supplies (24 VDC normal supply and emergency supply), an automatic switchover is provided. Panel is executed with potential free contacts for interfacing to VDR. (For open-close and alarm signals).

**General arrangement has to be provided with order in \*dwg. format.**



**Stainless steel sill plate for flush installation on deck (art. code 340.001)**

Pre-mounted bolted hinged plate mounted on doorframe. Plate will be lifted up by doorplate during closing of the door. Recess to be provided by yard according available drawing (HD-SILL-003). Surface treatment: passivated.

**Push button operation (art. code 340.002)**

Instead of lever operation. IP 67 pushbutton boxes for installation on both sides of the door, loose supplied, complete with welding plate and mounting material.

**Emergency station (art. code 340.003)**

Manual hand pump unit with valve, 3 litre tank and lever to close door from above bulkhead deck level. Indication box for open and closed (red/green led) included welding plate and mounting material. One hydraulic pipe system (between hand pump and the door), piping yard supply.

**Hardcopy installation, operation and maintenance manual (art. code 340.004)**

Hard copy in English language

**End layer paint inside bulkhead plate (art. code 340.005)**

For easy painting on board the inside bulkhead plate can be painted in a final colour (to be advised by yard at order) before installation of the components.

**End layer paint door and frame (art. code 340.006)**

The complete doorframe and doorplate can be painted in a final colour (specification to be advised by yard at order). Note: Paint will be damaged during testing, transport and installation on board.

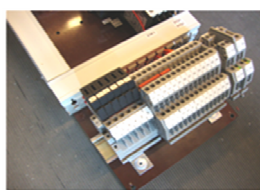
**Remote closure indication box (art. code 340.007)**

Consist of: Remote closure indication box (2x) showing warning on each side of the door that door is in central closed mode operation. IP67 box incl. red Led with text: 'remote controlled'. Incl. welding bracket (2x) & bolts (8x). Loose supplied. Only applicable on DNV classified doors.

Wheelhouse panel



Control box



**Electro-Hydraulic Watertight  
Sliding door EAGLE Q-line  
(article code 441.)****General description/ operation & control**

The EAGLE is a compact door which means that the power pack, valve block, hand pump and control box are pre-mounted on the bulkhead plate and welded to the door frame. Rail extensions with support and bolts, wheelhouse panel and emergency station are loose supplied. Each door has an independent electric-hydraulic system with one power source consisting of a motor and pump capable of closing or opening the door between 20 - 40 seconds.

**Normal local operation**

Local power operation by handle (optional pushbuttons) at either side of the bulkhead, closing and opening. "Door open" as well as "Door close" is active operated which means that the door will stop after the release of the handle (or pushbuttons). The motor is only running while the handle (or pushbuttons) is operated.

**Emergency local operation**

Local emergency operation by a hand pump operable from either side of the bulkhead, to allow closing and opening. To close the door: The hand pump is to be operated. To open the door: Operate the valve in "open" direction and then the hand pump is to be operated.

**Remote power operation**

By master mode switch from the wheelhouse panel (optional). The main control in the wheelhouse is executed with a "master mode" switch with two modes of control. The 'doors closed' mode automatically re-closes the doors after they have been opened locally. (pre-warning of 5-10 seconds according SOLAS is provided). The 'local control' mode allows the doors to be opened locally without automatic re-closure.

**Emergency remote operation (optional)**

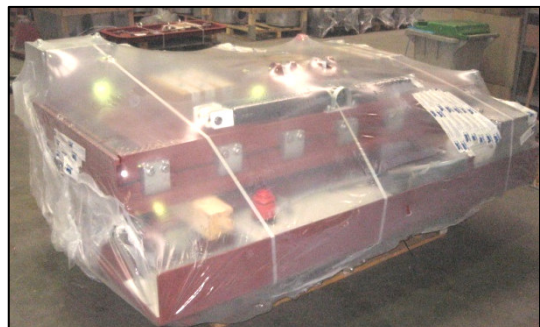
Emergency operation by a handpump, above bulkhead deck, closing only.

**Alarm/indication signals**

Locally there is an audible alarm (sounder) combined with a visual alarm (flash light). At the remote emergency station a visual indication (red/green lights) is present. The wheelhouse panel shows the location of the doors and is equipped with indication lights for open/close indication and alarm signalling incl. buzzer when main or control power supply is lost.

**Packing**

Doors are packed according our standard packing instructions, sealed on a wooden pallet.





**/// Available article codes**

**Doors**

Please specify article codes when asking for quotation or ordering as follows:

441.11.HxW	Q-line Eagle, 1 Cylinder version, Left closing	(HxW = clear opening in mm)
441.12.HxW	Q-line Eagle, 1 Cylinder version, Right closing	(HxW = clear opening in mm)
441.51.HxW	Q-line Eagle, 2 Cylinder version, Left closing	(HxW = clear opening in mm)
441.52.HxW	Q-line Eagle, 2 Cylinder version, Right closing	(HxW = clear opening in mm)

**Example code: 441.51.1850x850**

Specify options	:	(art. code)
Specify water pressure	:	(maximised on 10 Mwc)
Specify Class Society	:	
Quantity	:	